



# 6D5N HANOI + HALONG BAY (Overnight on Land) + SAPA

**Buy 3 Adt  
Get 1 Adt FREE**  
(Min. 04 Adult)



Validity : 07 JUL 2018 - 31 DEC 2019 (GV 02) (LAND TOUR)

**DAY (01) ARRIVE HANOI ~ HANOI CITY TOUR (LCH & DNR)**

Meet & greet service by local tour guide at **Noi Bai international airport (New Terminal GATE A 02)** then transfer for hotel check in. However, hotel standard check in time starts from 1400 hours, early check into hotel rooms are subject to hotel room availabilities or at hotel's own discretions. Continue for Hanoi city tour and visit to **Ho Chi Minh Mausoleum Complex ~ Ba Dinh Square, Uncle Ho's Stilt House, walk pass Mango Alley, Botanical Garden and the Presidential Palace ~ Former Residence Of The Governor Of Indochina.** After 1954 it was named the Presidential Palace and became the place where Ho Chi Minh lived and worked until he passed away in 1969. **On the way out visit One Pillar Pagoda, the pagoda was constructed in 1049 by King Ly Thai Tong;** however, in 1954 the pagoda was destroyed by the French before their withdrawer. After taking over the city on October 10<sup>th</sup> 1954, Vietnam Ministry of Culture restored the pagoda. The pagoda of today remains since this restoration. **Follows with visit to Temple of Literature (First University In Vietnam), Tran Quoc Pagoda, photo stops at Hanoi Opera House & St. Joseph Cathedral also Hoan Kiem Lake, then to Hanoi Old Quarter ~ The 36 Ancient Streets.** Guests may enjoy free time for shopping activities @ Hanoi Old Quarter; recommended streets for shopping activities such as: **Hang Gai Street** for silk materials and embroidery products, **Cau Go Street** for women's accessories, **Hang Dau Street** for shoes, **Hang Hom Street** for lacquer ware and handicrafts made by bamboo materials. Assemble as per agreed schedule for dinner arrangement at local restaurants, after dinner transfer back to hotel and tour programs end.

**DAY (02) HANOI > LAO CAI > SAPA VALLEY > CAT CAT VILLAGE > SAPA VALLEY (B/L/D)**

Local coach company will pick up guests from hotel as per agreed schedule for transfer services to SAPA via the new highway which has started operations on 21 SEP 2014, the journey are approximately 245 KM and durations approximately 05 HOURS (inclusive of 30 minutes toilet break) passes thru 05 provinces and cities, namely Hanoi, Vinh Phuc (Tam Dao tourism area), Phu Tho, Yen Bai and Lao Cai. **The new highway will reduce travel time between Hanoi and Sapa town and the Lao Cai International Border Gate to HEKOU, CHINA.** Upon arrival in SAPA, check in hotel follows by lunch and continue tour programs. After lunch, we will visit **Cat Cat- the old village of ethnic groups, especially Black H'Mong.** The road leading to **Cat Cat Village** is an easy and interesting route for trekking. The spot is only within 20-30m minutes walking from Sapa center; and the hike through mountains will offer tourists the wonderful picture of rice paddies, water fall, or even water buffaloes grazing leisurely. Visiting Cat Cat, tourists will be impressed by the peacefully picturesque sceneries also a chance to have a glimpse into the daily life of local ethnic people, as well as take part in traditional activities such as weaving fabric. It is also a good opportunity to purchase some traditional souvenirs and handicrafts right from the craftsmen. People can also try some local food selling the way upcoming to the hill. Return hotel for freshen up then dinner at local restaurants, tour programs end.

**DAY (03) SAPA VALLEY > HAM RONG MOUNTAIN PARK > LAO CAI > HANOI (B/L ONLY)**

This morning we will visit **Ham Rong Mountain Park ~** this park is essentially a long cobblestone walkway to the top of Ham Rong Mountain. Along the way, there are countless potted orchids, beautifully landscaped gardens and a few really tacky statues of cartoon characters like Scooby Doo and Mickey Mouse. The scenery hidden in the fog and echo sound from bamboo flutes of Mong minority boy change this place into a heaven on the earth. Another interesting activity is conquering **San May (Cloud Yard)**, the peak of Ham Rong Mountain at the altitude of 1800m to enjoy the imposing panorama of Sapa town. In sunny days, from here tourists can even see the peak of Fansipan under clear sky with white cloud floating around. Along the way to San May, tourists may drop by **Cong Troi 1, Cong Troi 2 (Heaven Gate 1 and 2) for resting and photo taking.** These places also offer visitors a great view to French villas and terraced fields below. Return hotel for freshen up and check out then to local restaurant for lunch. Guests may continue to explore this beautiful small town or shopping activities at local shops who promotes products from boarder HEKOU, CHINA - plenty of sports attire, trekking shoes & etc..... **We will depart around 1600 HOURS and return to HANOI ETA HANOI around 2100 hours.** Upon arrival in HANOI, coach company will provide drop off transfer service from bus station to hotels in HANOI; tour programs end. **Dinner at own expenses in local break stop along the highway.**

**DAY (04) HANOI > HALONG BAY (OVERNIGHT ON LAND) (B/L/D)**

**HA LONG**, the name derived from the Sino- Vietnamese meaning "DESCENDING DRAGON". In 1994, the core zone of Ha Long Bay was listed by UNESCO as a World Heritage Site according to criterion 07, and listed for a second time according to criterion 08. Ha Long Bay is located in Quang Ninh Province, Vietnam and approximately 180KM away from HANOI. Assemble as per agreed schedule at hotel's lobby for **SEAT IN COACH SHARING** transfer services to Tuan Chao Harbor, HA LONG BAY, Embark on board traditional Vietnamese design merchant boat (junk boat) for cruise tour activities (approximately 03-04 hours) along HA LONG BAY; visit grottoes and floating villages such as supreme **Thien Cung Cave;** sail and pass by Stone Dog Island, Cat Islets and Fighting Cock Island, Ba Hang fishing village. Tour programs end around 1700 hours, **disembark at TUAN CHAO harbor and transfer for check in to hotel and tour programs end. Dinner with basic menu will arrange by hotel operators.** Guests' may self arrange to visit Sun World Ha Long Park OR Halong Night Market in the evening.

**DAY (05) HALONG BAY > HANOI (BREAKFAST ONLY)**

Rest & relax at hotel, check out from hotel by 1100 hours and assemble at hotel's lobby for transfer services and return to Hanoi, check in hotel and tour programs end. **REMARKS: Self arrange for lunch and dinner, at own expenses.**

**DAY (06) DEPART HANOI (BREAKFAST ONLY)**

Assemble as per agreed schedule at hotel's lobby for pre-arranged transfer services to airport, flight home with "AN AMAZING HOLIDAY EXPERIENCE IN VIETNAM".



PROPOSED HOTEL(S)	TRP/TWIN	SGL	CWB	CNB	HANOI HTL EXT PR/PN		
					TRP	TWN	CNB
AUTHENTIC HOTEL CHURCH BOUTIQUE HANG GAI HOTEL	559	729	429	289	120	80	15
HTL KURETAKESO T N 84 THANG LONG OPERA HOTEL	589	779	449	309	140	95	15
GRAND CITITEL HTL HANOI THE LIGHT HOTEL	619	829	469	319	160	105	20

Public Holiday Surcharge: 31 Aug - 02 Sep / 24 & 31 Dec 18 / 28 Apr - 05 May 19 / 31 Aug - 02 Sep 19 / 24 & 31 Dec 19 : ADD \$45 per person  
 Public Holiday Surcharge: 01-10 Feb 19 : ADD \$80 per person

**Packages Includes: (LAND ONLY) - SIC-04D-185509 (Updated: 14/07/18)**

- ✓ 3 nights' accommodation in **HANOI** as above proposed hotels + daily buffet breakfast.
- ✓ 1 night accommodation in **SAPA RELAX HOTEL & SPA, SAPA VALLEY** as above proposed hotels + daily buffet breakfast.
- ✓ 1 night accommodation in **PARADISE SUITES HOTEL, HALONG** as above proposed hotels + daily buffet breakfast.
- ✓ **04 HOURS CRUISE ACTIVITIES + LUNCH ~ VISIT THIEN CUNG CAVE & DAU GO GROTTO.**
- ✓ Cruise operators will provide transfer services based on SEAT IN COACH SHARING TYPE >>> HANOI > HALONG > HANOI SECTORS.
- ✓ Executive coach company (shuttle service) from HANOI > SAPA > HANOI SECTORS.
- ✓ Guided tour programs, admission fees to all attractions and meals arrangements as mentioned in proposed tour itinerary.
- ✓ Tour commentaries by local tour guide will conduct in **ENGLISH** language.
- ✓ One bottle of filtered drinking water will provide daily on coach.

**Package Exclude:**

- Return Airfare & Airport taxes
- Tipping for Guide & Driver SGD\$5 p/person/day (Pre - collect in Singapore)



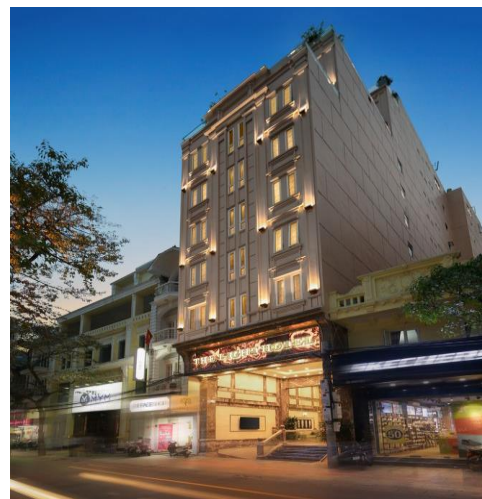
**(PARADISE SUITES HOTEL, HALONG BAY)**



**(Authentic Hotel)**



**(Thang Long Opera Hotel)**



**(The Light Hotel)**